

offene Kante einkräuseln

B
Vorderteil

Tasche

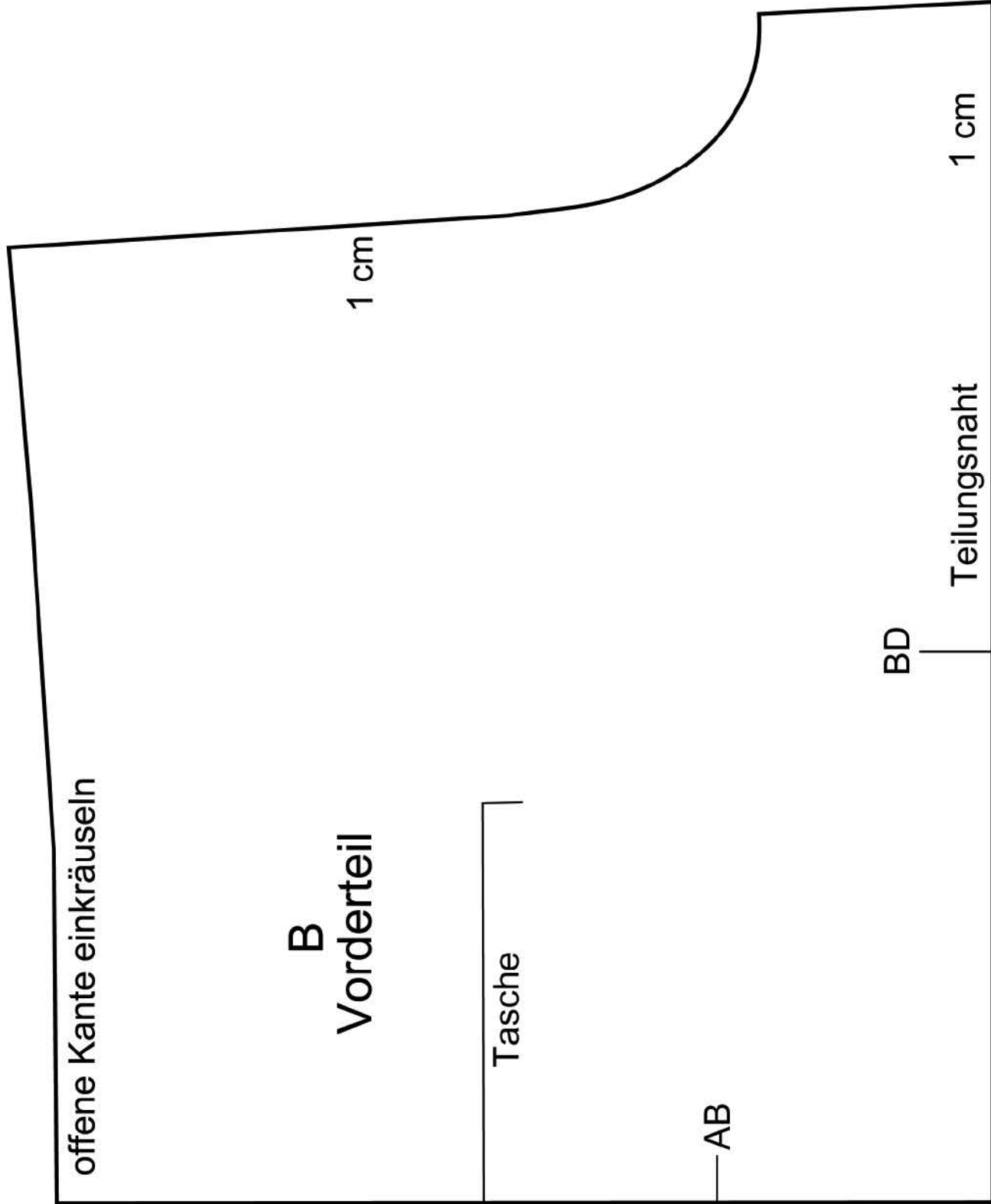
— AB

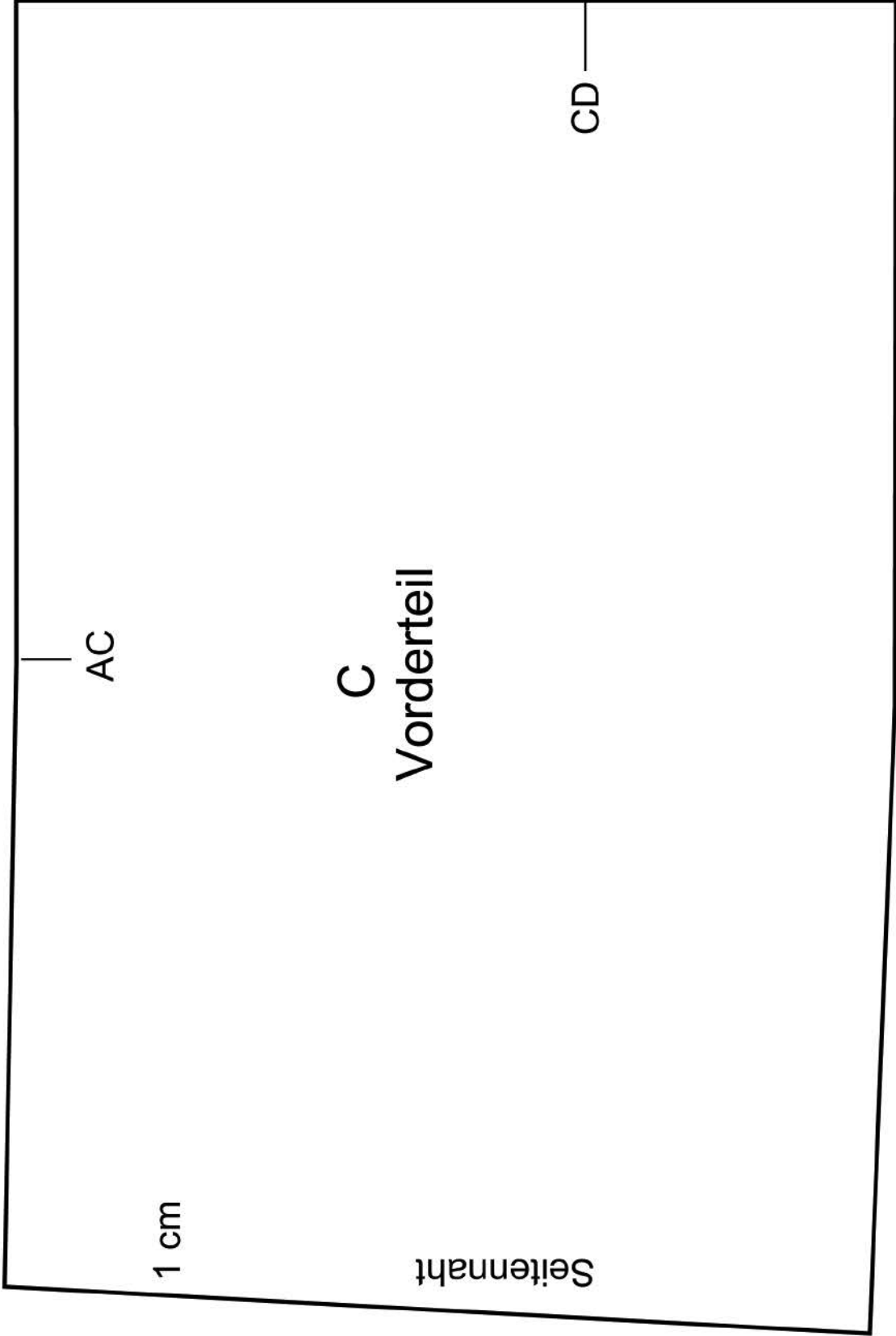
BD

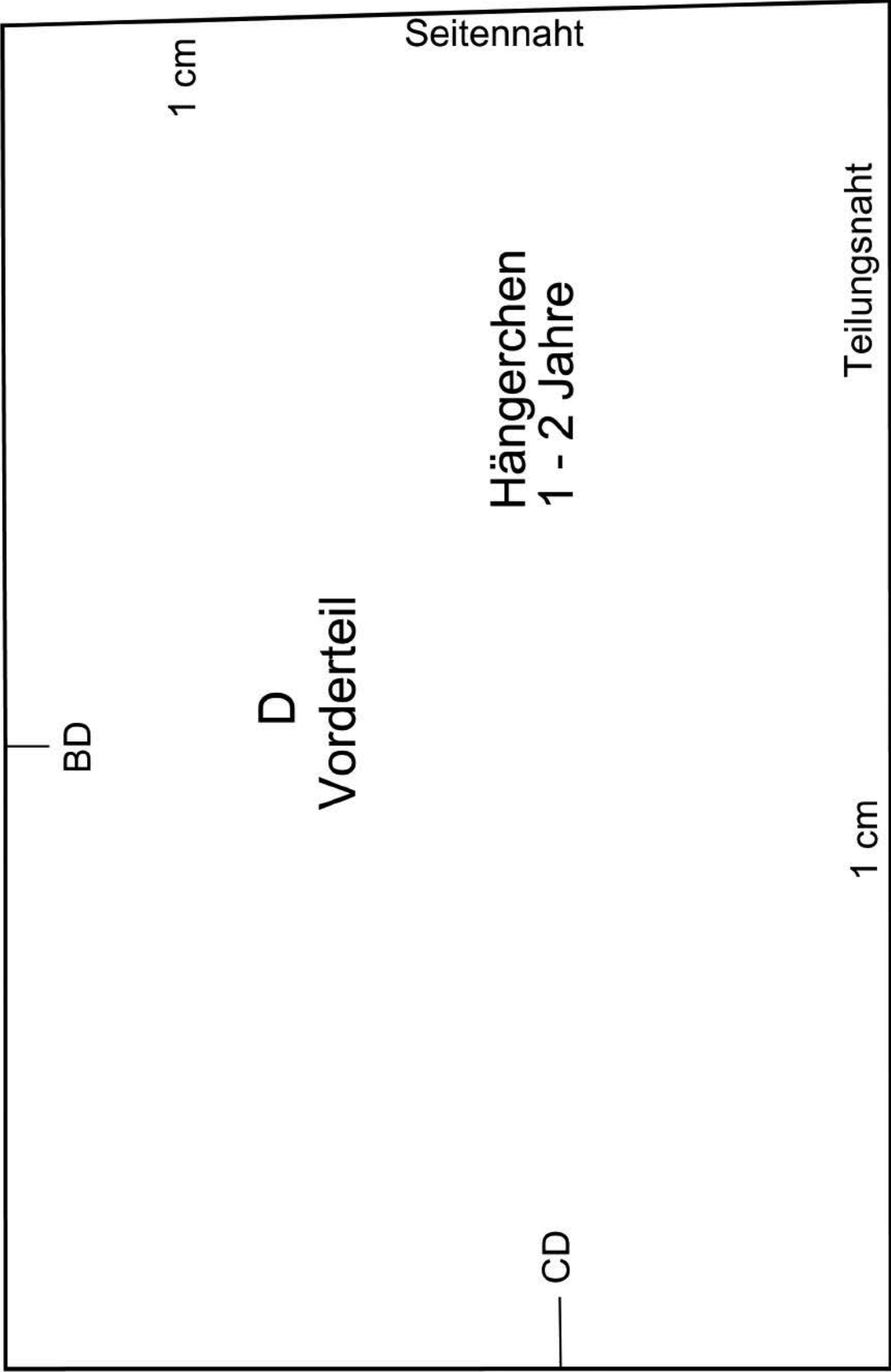
Teilungsnah

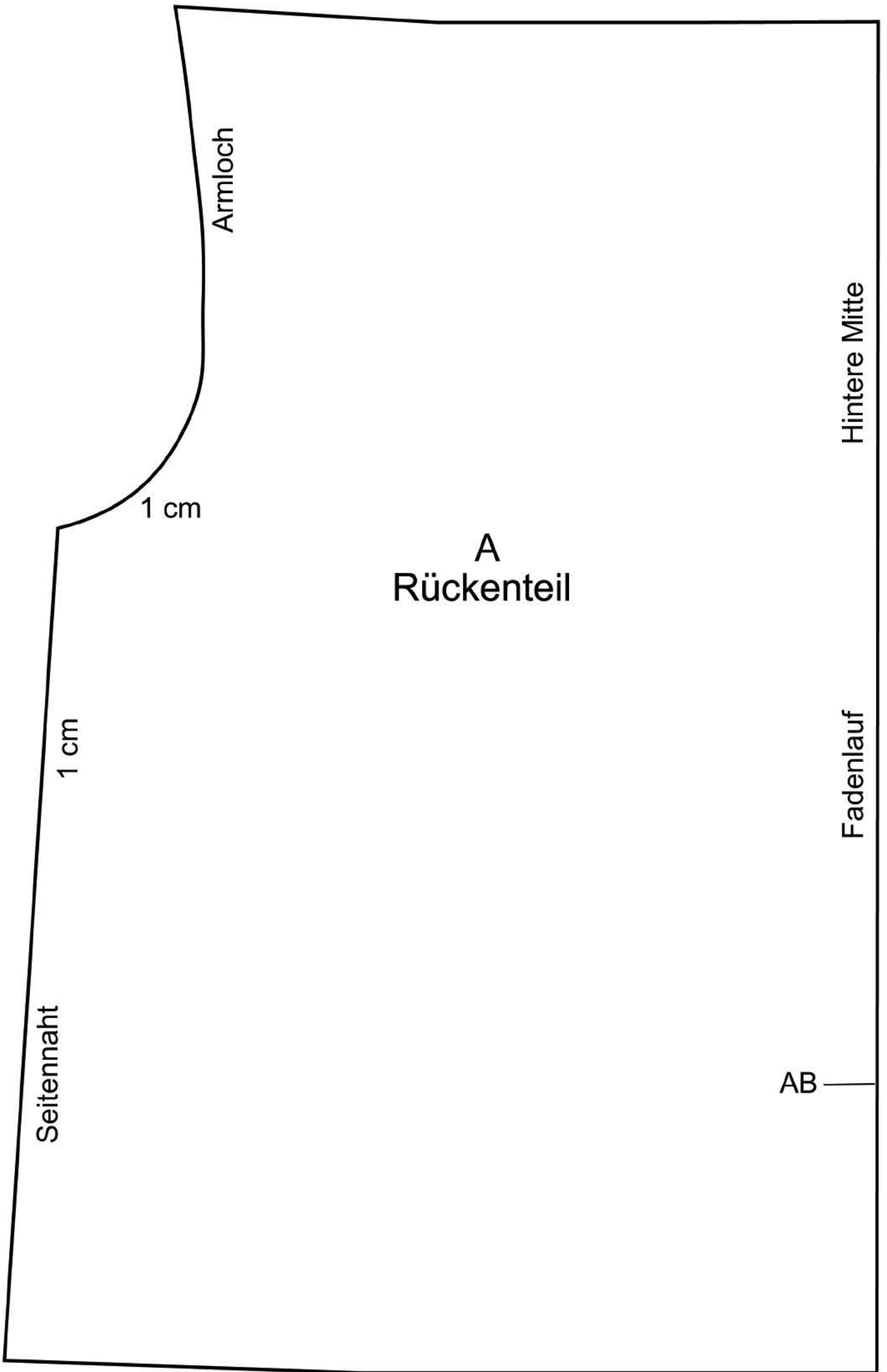
1 cm

1 cm









offene Kante einkräuseln

B
Rückenteil

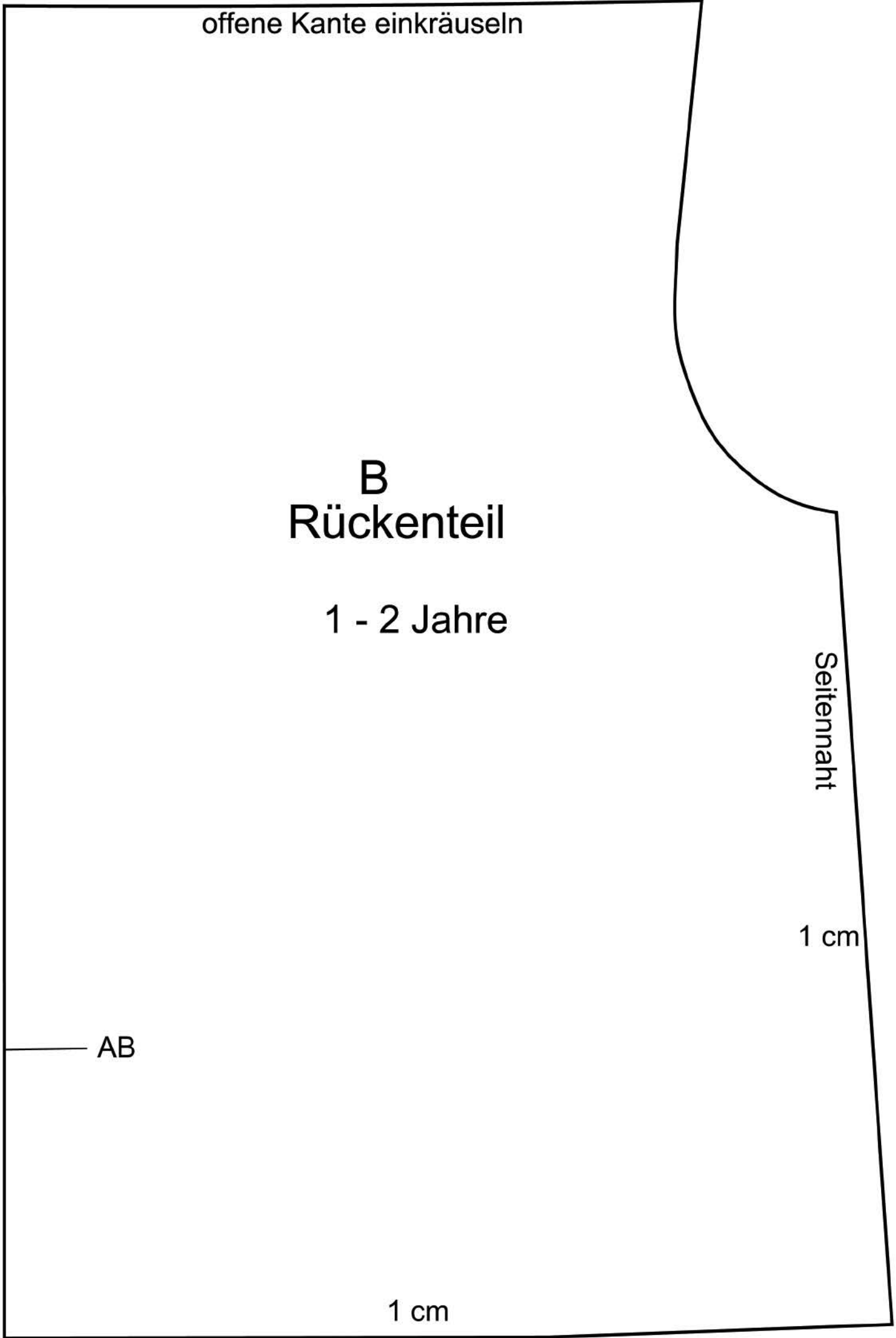
1 - 2 Jahre

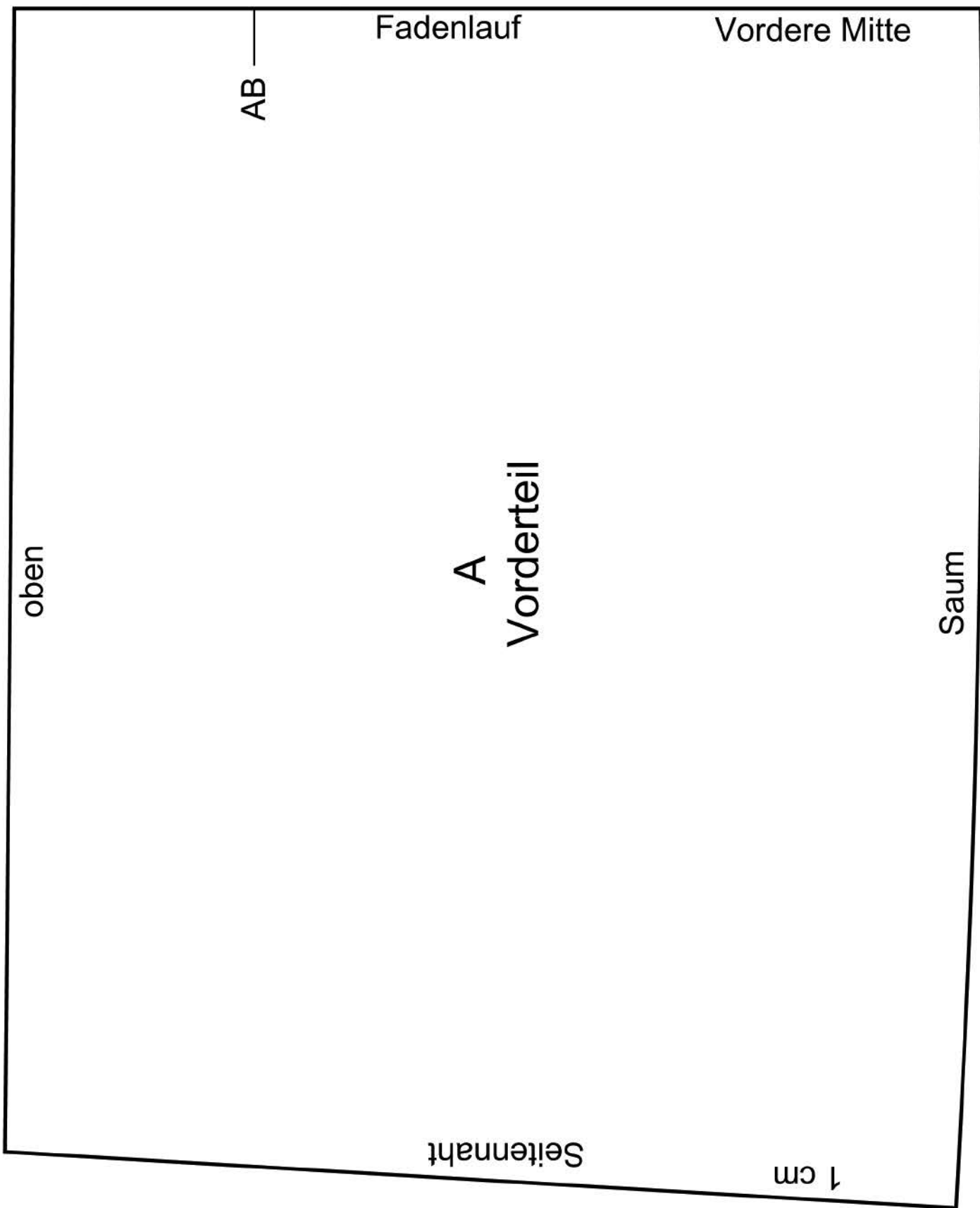
Seitennah

1 cm

AB

1 cm





Fadenlauf

Vordere Mitte

AB

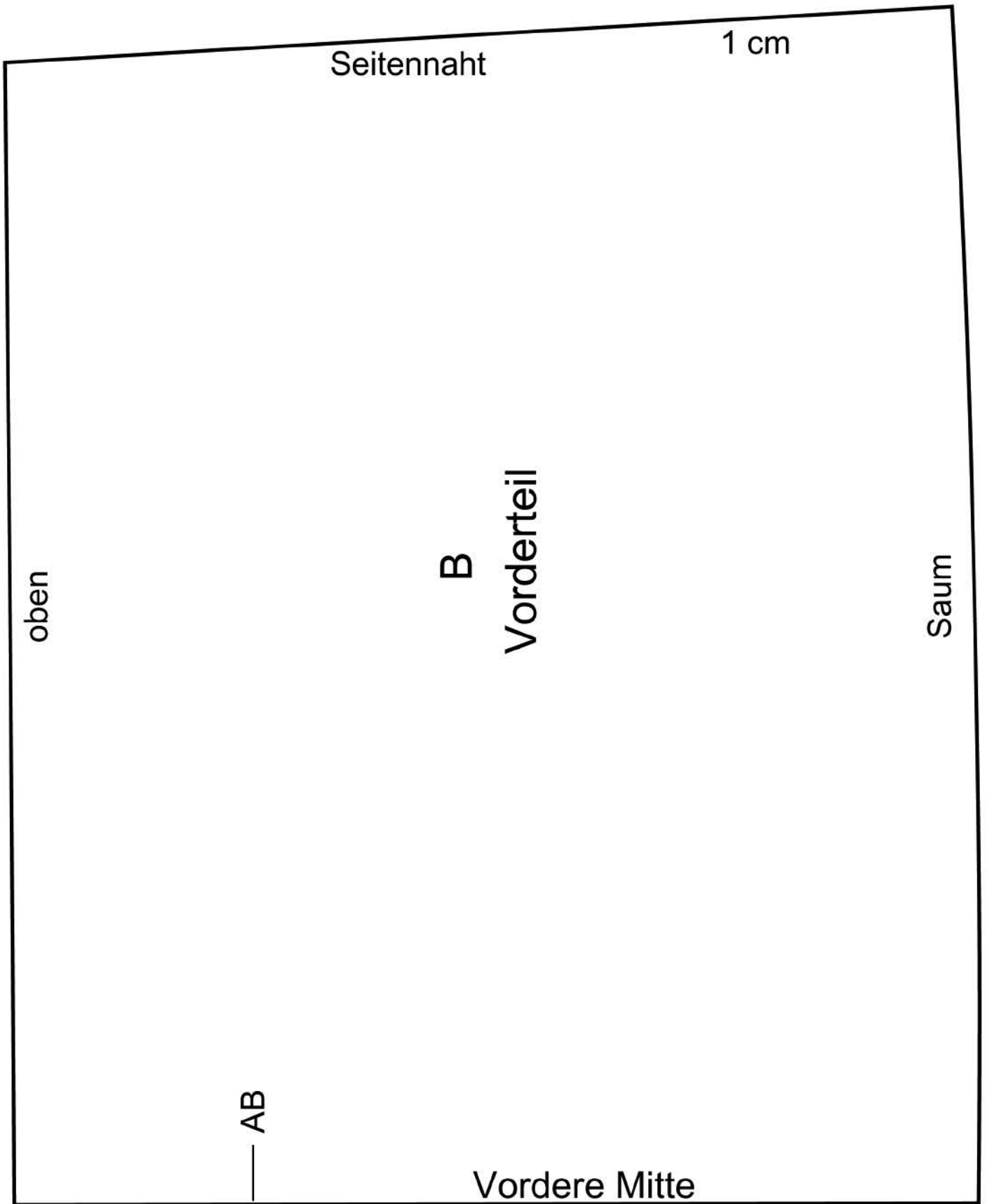
oben

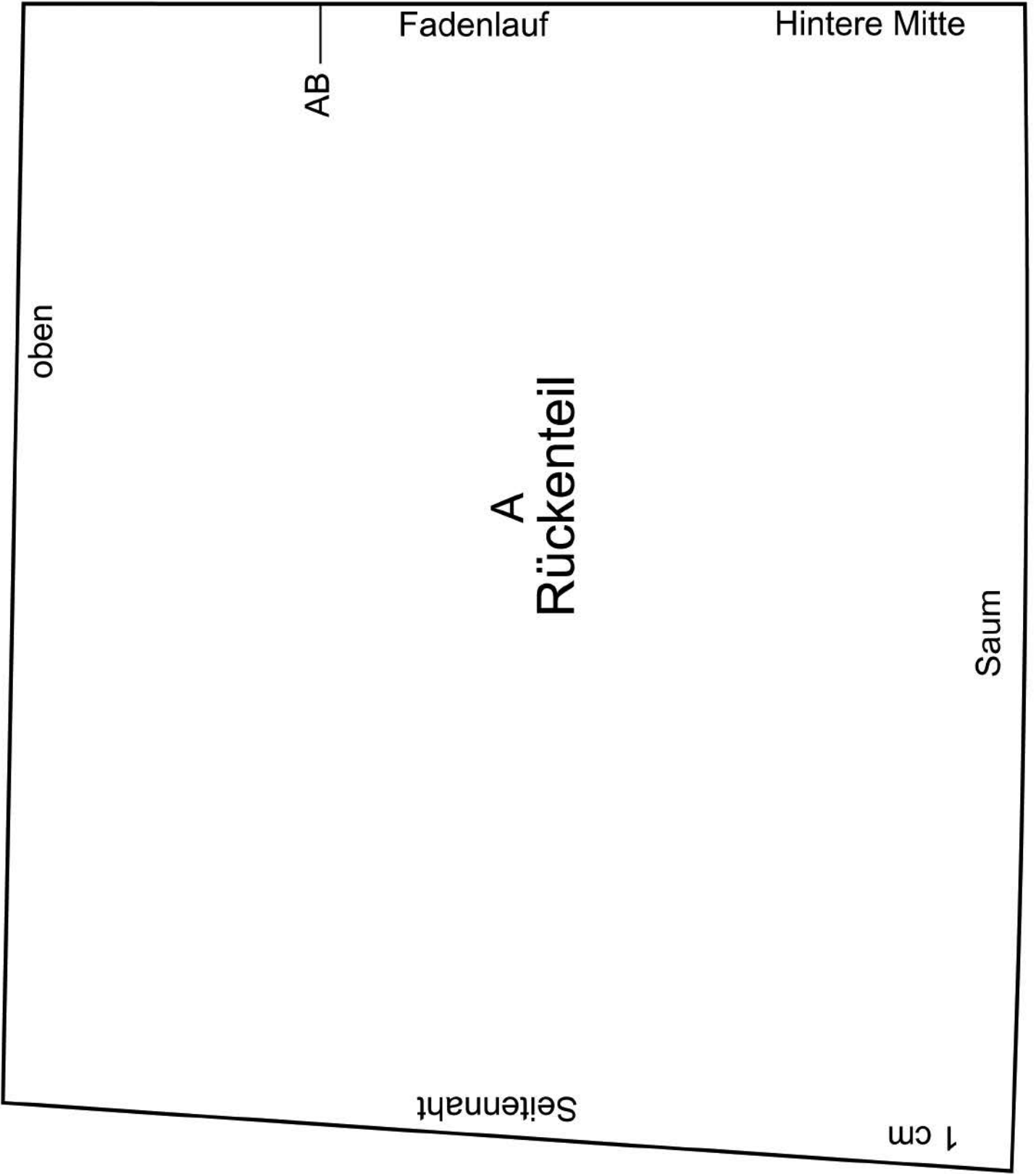
A
Vorderteil

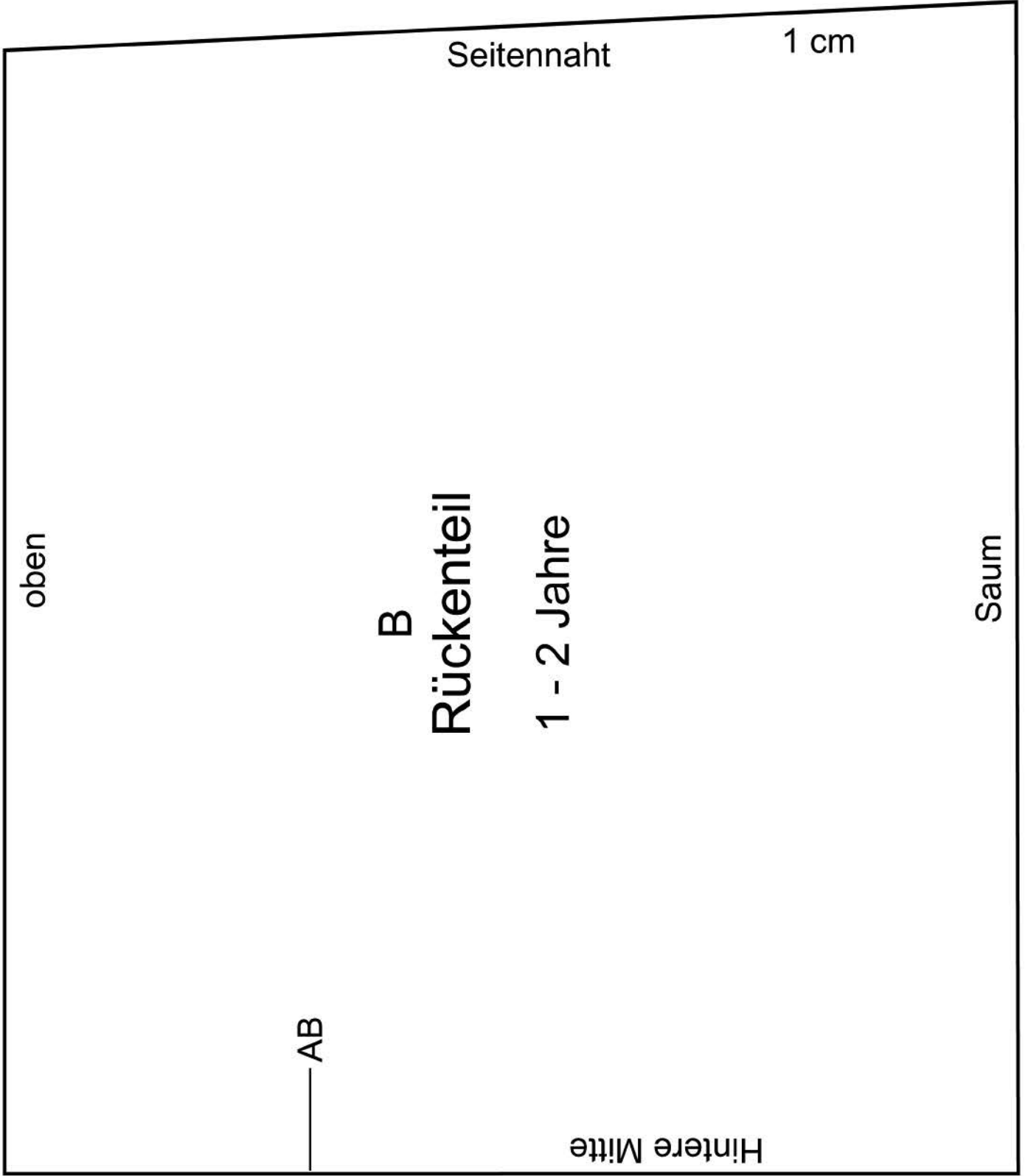
Saum

Seitennah

1 cm







2 x 1 cm einschlagen

Tasche

